

Patent pending:

Liberator & EZSoffitVent™

Professional grade soffit Termination system



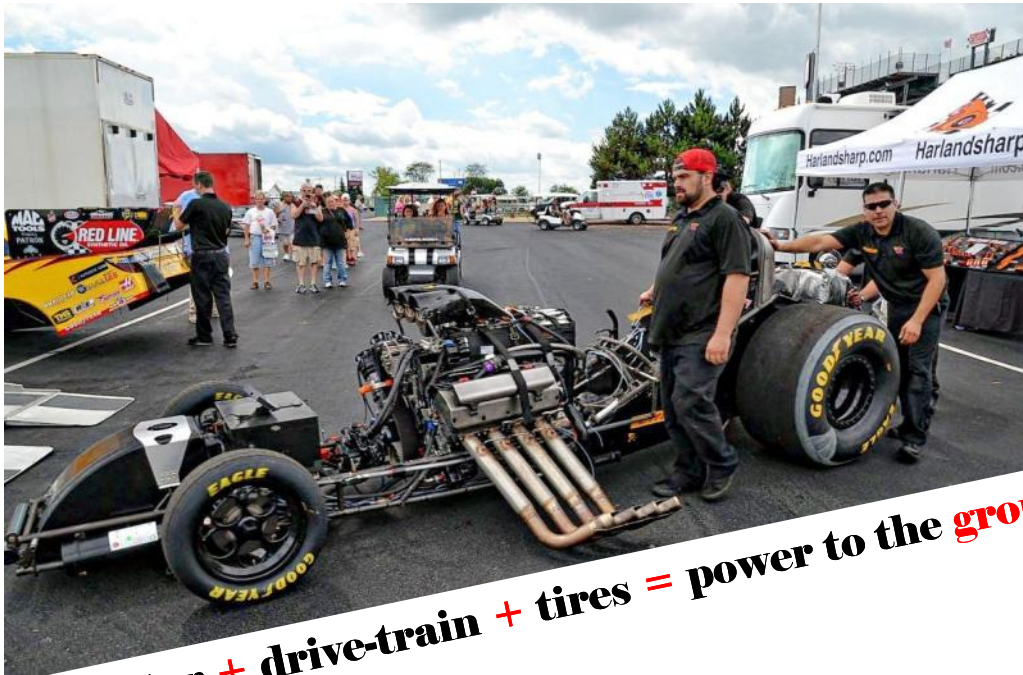
❑ Detailed Installation instructions

➤ Instructions and best practices for installing the fitting along with ducting tips when using 4" flex duct



Liberator sold by BathFan Solutions, LLC
EZSoffitVent sold by Panasonic

What's the goal?



Motor + drive-train + tires = power to the ground!



Fan + duct work + termination = moist air to the outside!



Packaging

- One unit per package



Contents

- One assembled unit w/bracketry
- Installation instruction sheet in:
 - English
 - Spanish
 - French
- Screw packet:
 - 1- #8 x 1-1/4" Plastite screw
 - 6- #6 x 3/4" drywall screws



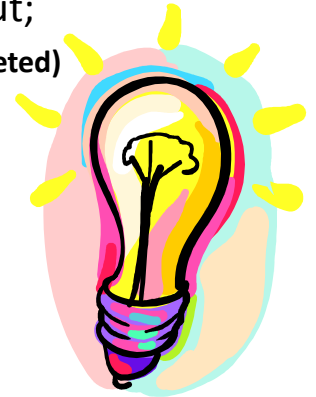
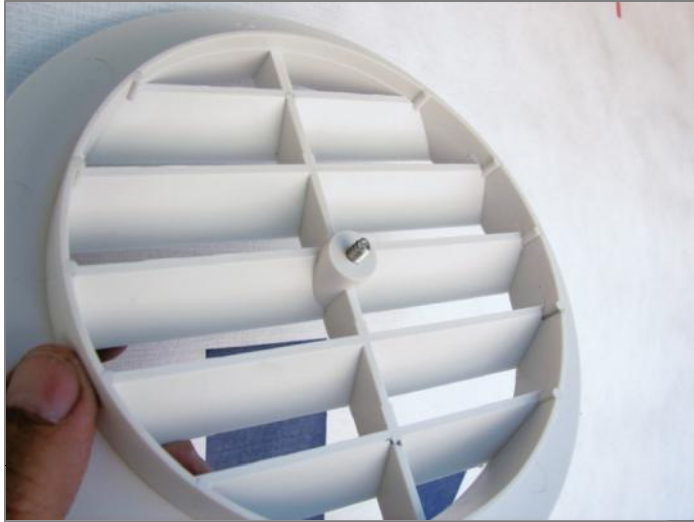
Tools & Supplies

- Tape measure
- Marker
- Cordless Drill
- #2 Phillips bit
- Magnetic drive
- Small level
- Approved tape
- 1- tie wrap
- Utility knife
- Wire cutters
- #2 Phillips screwdriver



Pre installation recommendations:

1. Insert grille retainer screw into the grille. It has a retainer feature
2. Near the installation location, hang the grille temporarily to avoid dropping, but;
(install the grille when ducting is completed)



MOUNTING LOCATION CHOICE: Fascia board inner surface

- Places air discharge farthest away from building to prevent re-entry (preferred placement)
- Requires no addition framing members or parts for installation
 1. Select the same truss cavity where the fan is installed
 2. **Connect ducting to the termination fitting first:** then trim to length and connect at fan

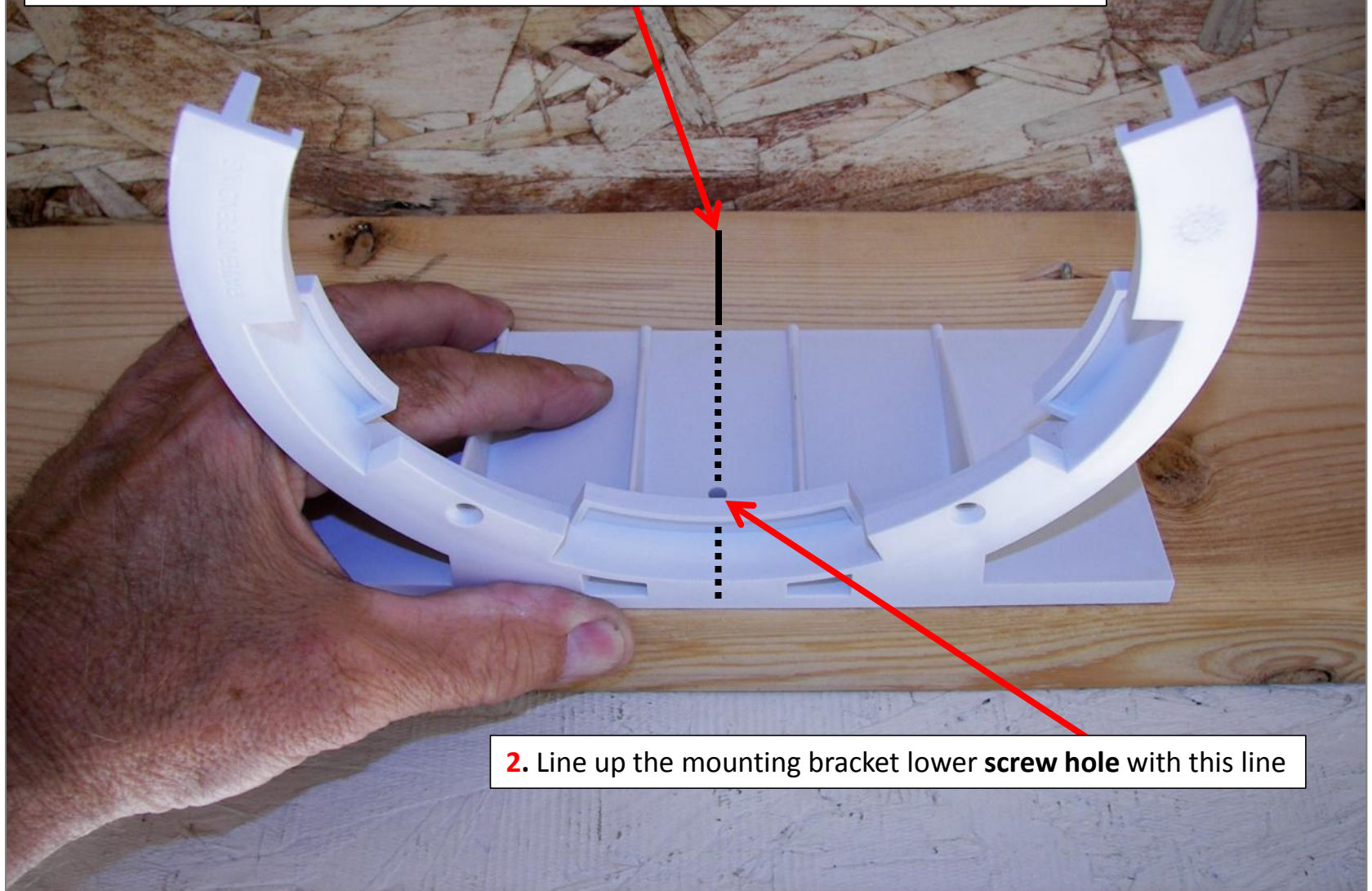
DUCT SELECTION*: 4" R-4.2 Class 1 insulated flex duct



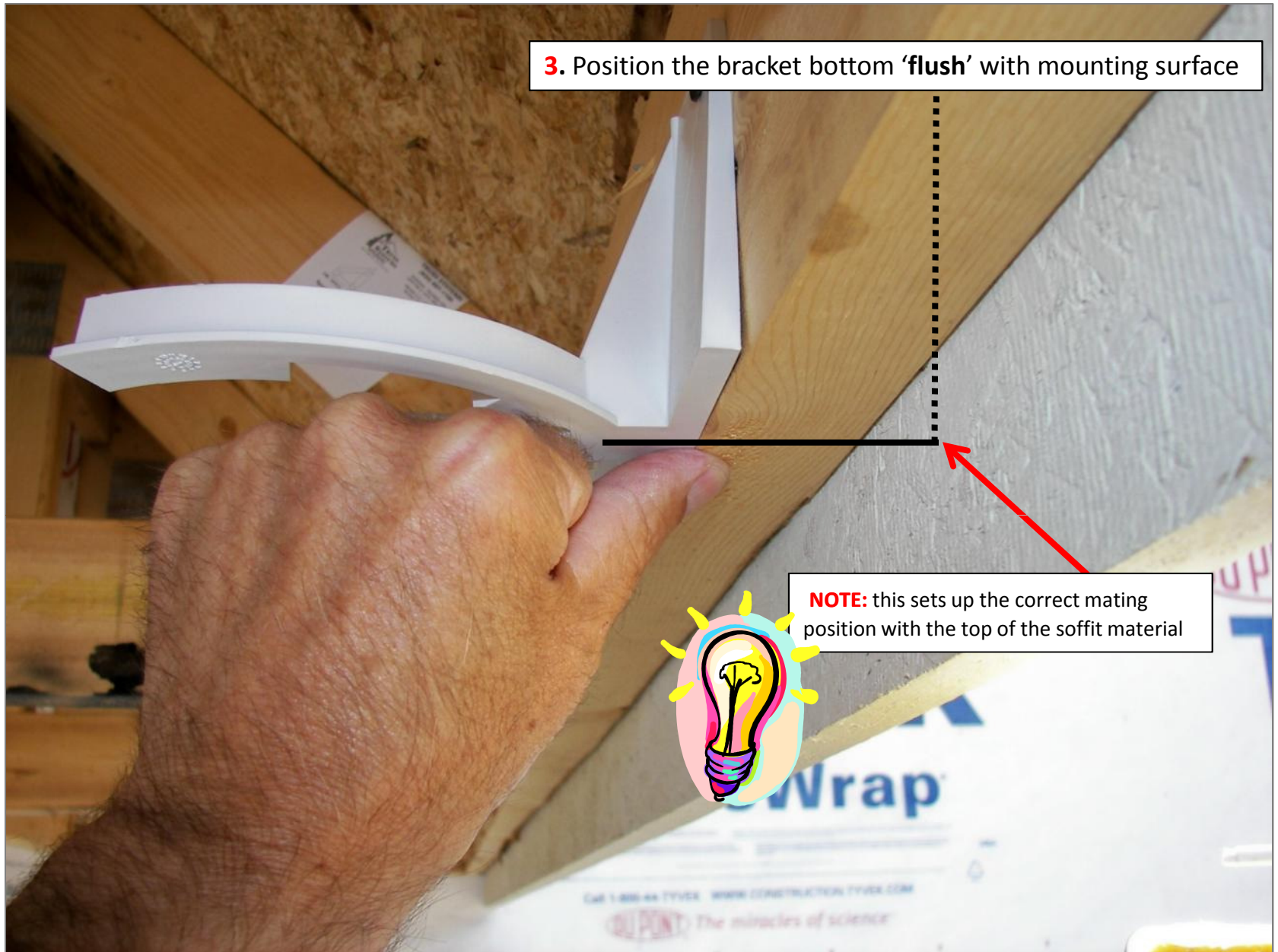
* Duct 'type and diameter' impacts air flow: select appropriate material type & size

For fascia area location mounting with 24" on center roof members:

1. Measure distance between members and place a vertical line at the center point

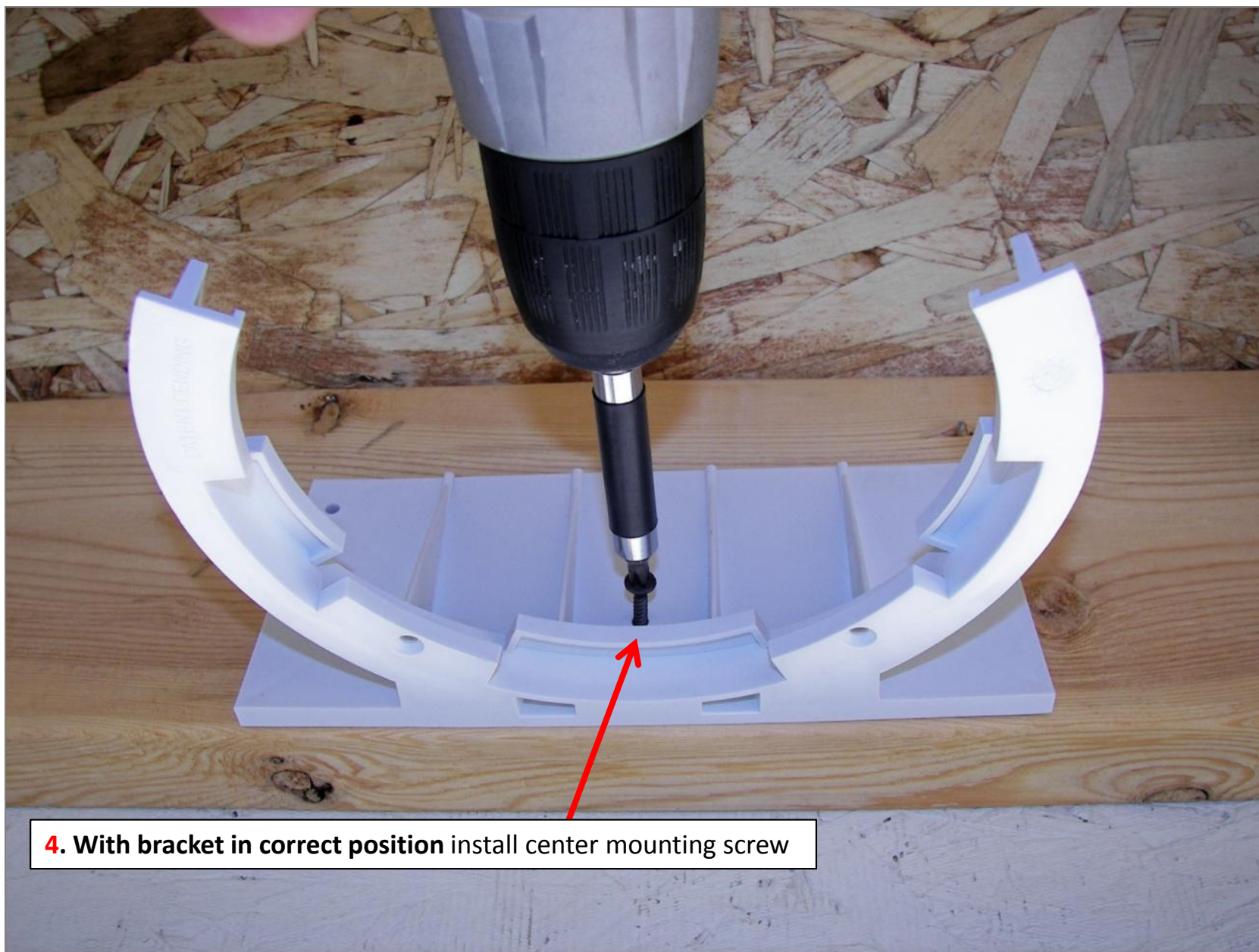


2. Line up the mounting bracket lower screw hole with this line





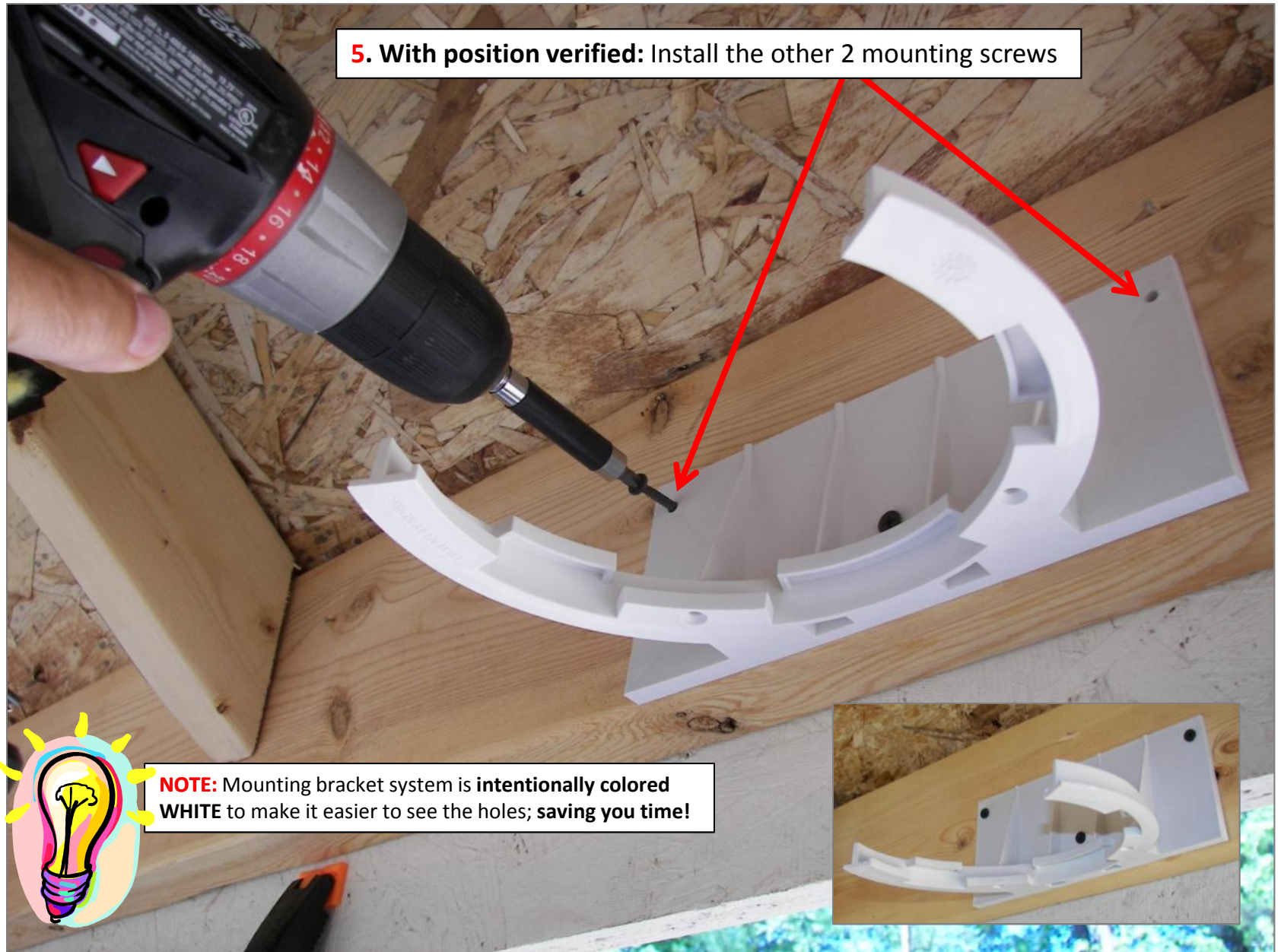
TIP: a clamp can provide an extra hand which can be very helpful when you're on a ladder!





NOTE: With bracket 'flush' with mounting surface, it should be level.
Good practice is to verify with a small level. The closer to level, the better damper function you get! (within the lines should be fine) Level also helps ensure a flush grille to soffit fit for a real clean look!





5. With position verified: Install the other 2 mounting screws

NOTE: Mounting bracket system is **intentionally** colored **WHITE** to make it easier to see the holes; **saving you time!**



NOTE: It's also **very important** to verify the bracket is level this way as well. If so, it will help ensure a good fit between the grille and the soffit face. If the bubble is between the lines you should be Ok as the bracket has some flex designed into it. Keep in mind that the soffit panel material will be pretty level between the fascia and the side of the building. Shim if needed.



Alternate location options and mounting:

- Termination assembly can be located anywhere inboard of the fascia by adding a single wood mounting member as shown in the 2 examples below, **or** you can space off the bracket from the fascia as needed.
- Once the wood member is installed, follow the installation steps shown in slides #7 - #13.



- In this picture a piece of sheeting was attached to the upper truss chord **flush** with the bottom of the fascia board and **level** across the bottom.
- Mount the bracket and check it for **level** both ways as **grille to soffit fit is dependant on this**.



- In this picture a piece of 2x4 framing was installed **flush with** the bottom of the fascia board and **level** across.
- Mount the bracket and check it for **level** both ways as **grille to soffit fit is dependant on this**.



6. Slide vent body rib into bracket positioning it between lower & upper rails



NOTE: Bracket is designed to 'pinch' the vent body once inserted, so it may take a little effort to insert into bracket.

7. Rotate the vent body so that the connecting flex duct forms a smooth and gradual sweeping elbow with minimal duct distortion as shown!





TIP: Be sure you have no obstructions at the connection end of any flex duct. Plastic often gets folded inwards or is ragged and can **restrict air flow**. Trim the end(s) if needed!

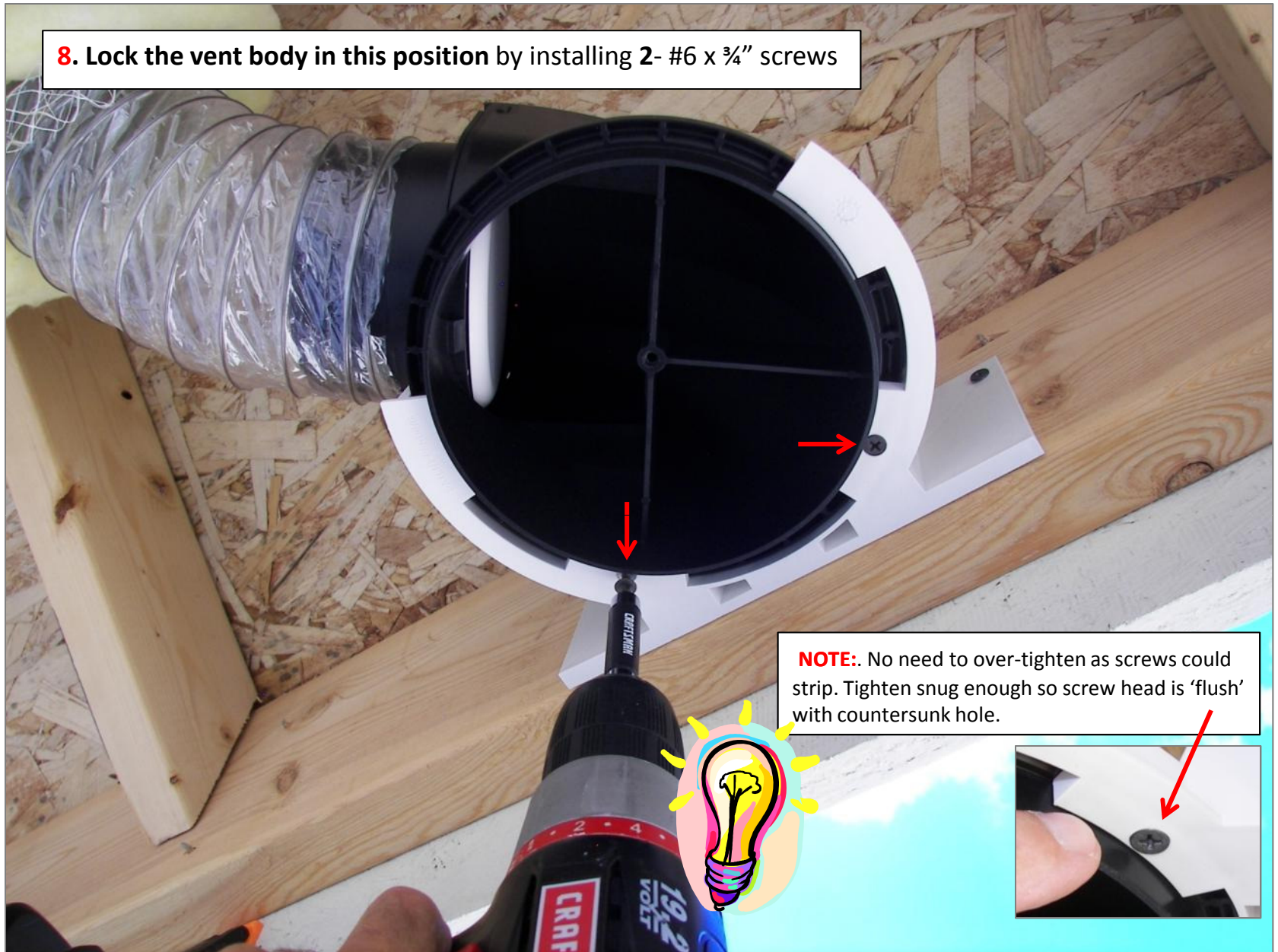




NOTE: View the flex duct from a couple of angles to ensure you form a smooth sweeping elbow with minimal distortion!



8. Lock the vent body in this position by installing 2- #6 x ¾" screws



NOTE: No need to over-tighten as screws could strip. Tighten snug enough so screw head is 'flush' with countersunk hole.



9. Seal duct to connection stub using approved UL-181 tape

NOTE: Butt duct work up to the shoulder. Seal across the full $\frac{3}{4}$ " width of step shoulder surface to ensure **permanent air-tight seal**.





10. Install bracket cap and lock in place with 1- #6 x ¾" screw



NOTE: The bracket 'cap' now completes the full circular mating surface for the soffit panel. This is similar to the mud-ring on a recessed light fixture.



11. Complete flex duct connection by bringing down the insulation and vapor retarder. **Fasten in place** with tie-wrap or approved tape.





NOTE: Even without the grill, the built-in back draft damper immediately provides protection against the **very common bird nesting problem** when building in the spring!

12. Installing the grille now completes the 'termination installation' at the exterior. Siding contractor can remove the grille, install the soffit, and re-install the grille time. Now go inside and trim the duct to length and connect to fan to complete the 'fan' installation. **Installer is done in one trip!**



NOTE: The grille is designed to retain the crew. Once inserted the screw is held to the grille to avoid having it fall to the ground or losing it!



**Outside Installation is now complete
at this point!**

*** End of basic installation process for the 'fan installer'**



'Soffit installer' instructions start here: →

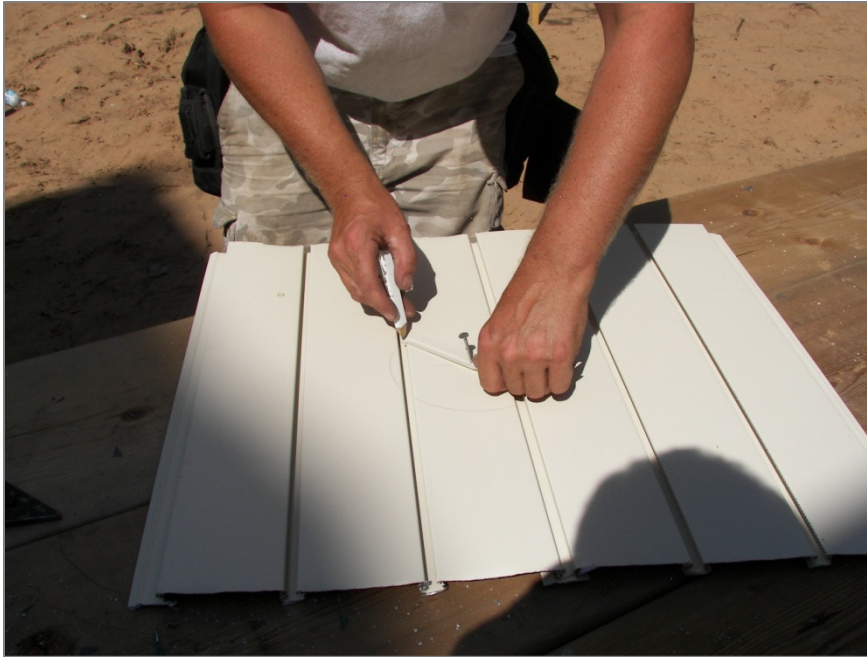
SIDING CONTRACTOR:

1. Remove grille and place in a secure spot: loosen screw just enough to remove the grille as the screw retainer feature will keep screw from falling out.



TIP: To avoid dropping or losing the grille, hang it on a nail or screw near the finished location!





**2. Locate the correct position in the soffit panel(s)
and cut the hole:**





3. Install panel(s) and reinstall grille with vanes directing air 'away from' the building:



Finished installation:

- Very attractive clean flush look
- Works with soffits 5/16" – ½ thick"
- Grille can be painted if needed
- Custom colors available*



- For custom color availability and ordering contact BathFanSolutions, LLC – Kaukauna, WI
- www.bathfansolutions.com

Additional website support coming soon:

- ✓ Other installation options for various ducting types & sizes
- ✓ Installation videos
- ✓ Research documents & videos



BathFan Solutions, LLC

Kaukauna Wisconsin

www.bathfansolutions.com

Joe Nagan – Managing member